

THERMEX TREND



Electric instant water heater



ENG

DEAR CUSTOMER!

Congratulations and thank you for choosing our instant water heater. The instruction contains important information about commissioning, switching the device on and maintenance. To ensure your safety and that of others we recommend you read through this safety manual carefully. Please refer to the back of the manual for details about the warranty. Keep this manual for future reference.

If you lose the manual, contact your local distributor or manufacturer. When you call, please tell us the model number and the serial number of your unit written on the rating plate of the water heater.

Symbols used in this manual

The following symbols are used in this manual and on the appliance:



Fail to observe this instruction may expose you or others to danger.
Fail to observe this instruction may lead to damage to the device.



Indicates live parts.
Fail to observe this instruction may lead to damage to the device or damage to others.



Please read the manual



Hazardous materials and waste electrical and electronic equipment should be taken to a designated recycling location.



This appliance can be used by children aged from 8 years and above and persons with reduced physical, sensory or mental capabilities if they are supervised during use of the appliance and understand the hazards involved.



This is not a toy. Children shall not play with this appliance.



Standards and regulations

The installation (plumbing and electrical work), commissioning and maintenance of this appliance should only be undertaken by personnel with electrical qualifications and in accordance with the relevant standards and codes and this manual.



Correct and reliable operation of this unit will only be ensured if the original accessories and spare parts are used.

The following should also be observed:

- the appliance name plate;
- the technical specifications.

COMPLETE SET

Device	- 1 pcs
User manual	- 1 pcs
Package	- 1 pcs
Mounting panel	- 1 pcs
Screw	- 2 pcs
Dowel	- 2 pcs
Gasket	- 1 pcs
Filter	- 1 pcs



Unpacking

Check if the device has been damaged in any way.



Environment

To prevent damage during transport this unit is shipped in sturdy packing. Please recycle the packaging where possible.



Disposal of the appliance

Old appliances must not be disposed of in your household waste! Please bring old appliances to the appropriate recycling center nearest to you.

Model Thermex Trend 4500 and 6000 do not have plug and need to be connected with single 220V supply directly.

If the electrical installation does not meet these requirements then it will need to be modified. This should be done by a qualified electrician in accordance with the relevant regulations (IEC, NEC, etc.)



Preparing for installation

The water and electrical supply need to be available at the place where the device is to be supplied. If the electricity cable is buried in the wall then use the supplied spacers. If the electrical cable is fixed to the wall then the device can also be fixed straight to the wall.



Frost

If there is the risk of frost in a room, the device should not be installed in this room. If despite this advice, the device installed in a room where there is a risk of frost, the device should be drained of water before the risk arises.

Connection to the water supply

Blue = cold water entry side (for filling)

Red = hot water exit side (hot water demand)

The Thermex Trend 4500 and 6000 devices are designed for use normal pressure systems. This system allows water to be drawn from multi point use.

The connection pipes must be installed as shown in the drawing.

The water supply pipe and water discharge pipe are marked (red for hot water, blue for cold water).

Connection to the electricity supply

The device must be filled with water. Only then may the appliance be connected to the electricity supply.

Connection of the device to the power supply network must take place in accordance with the NEC, IEC and as specified by local laws and regulations.

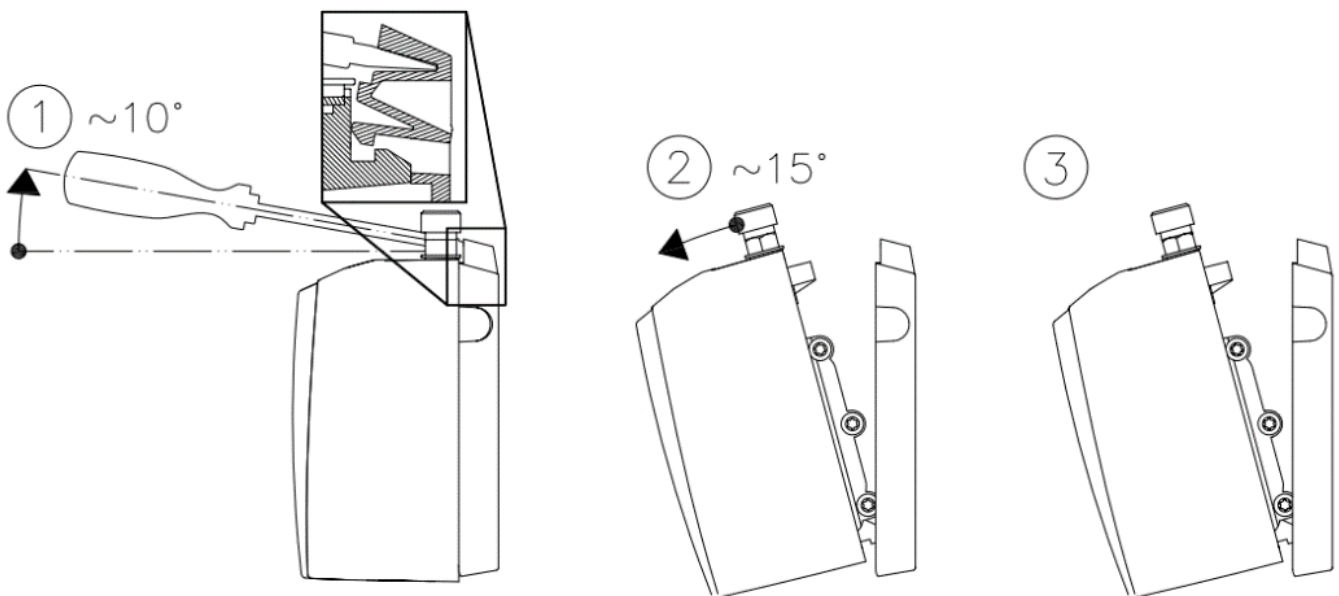
Avoid danger from damaged power supply cables. In the event of a damaged power supply cable, the unit should be unplugged and the cable replaced by a licenced electrician immediately.

Ensure that the addition of this boiler will not overload the fuse protection in your electrical panel.

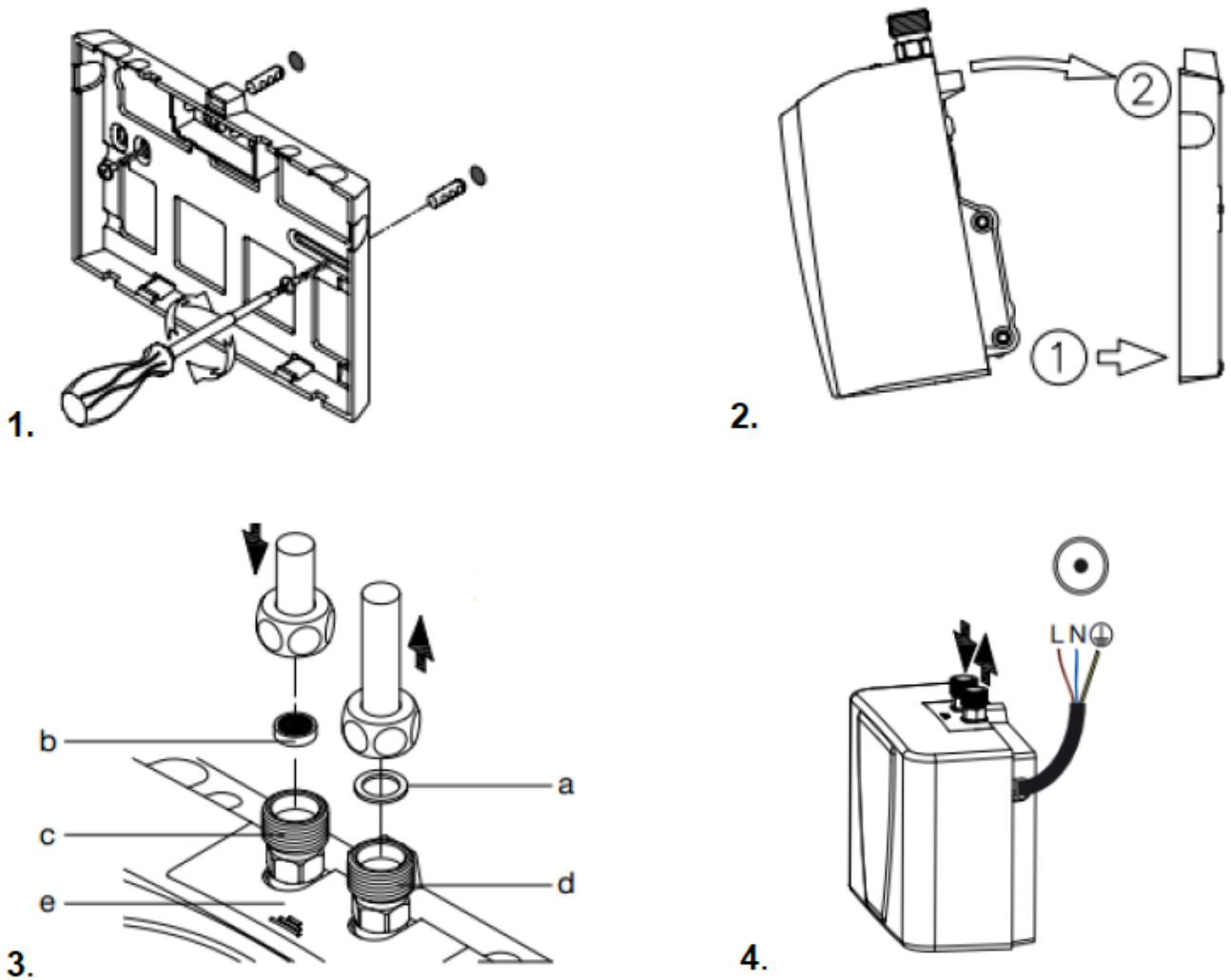
Internal modifications to the product may cause problems if this work is not carried out by authorized and qualified technical persons. The warranty only applies if the product has not been modified in any way, i.e. subject to it being in unchanged condition.

In order to avoid creating an unsafe situation by inappropriate resetting of the maximum temperature safety device, this unit may not be powered via an external switching device (a time switch for example) or connected to a circuit, which is regularly switched on and off.

Detachment of the assembly panel



Installation as undersink cable model

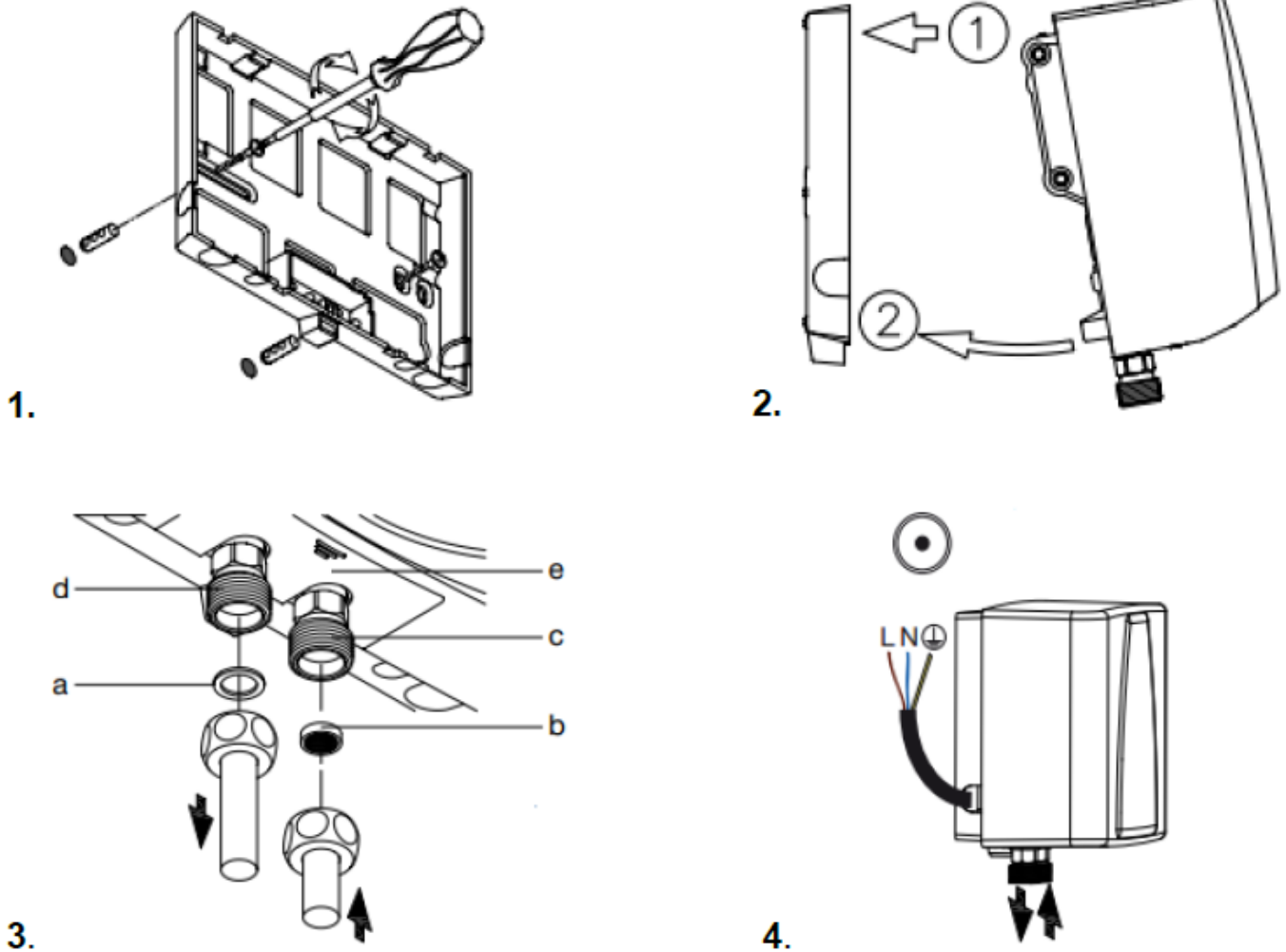


Switch off the power supply, then prepare the 220V ~ single phase power cord without plug, make sure the length no less than 300mm.

1. Mount the bracket on the wall and fix use two screws.
2. Disassemble the cover for the internal power cord connection.
3. For the undersink installation the two outlets are upper direction, the left outlet is the water inlet (cold / blue), right outlet is the water outlet (hot / red). Cross the power cord through the hole on the backboard, then push the water heater toward the bracket until listening "Click".
4. Connect the power cable to the internal terminal block, for the under-sink installation, terminal is GND-N-L respectively from left to right, for the undersink installation, connector is L-N-GND respectively from left to right, then fix the power cable.

Prepare water connections, assemble the cover, then switch on the power supply.

Installation as oversink cable model

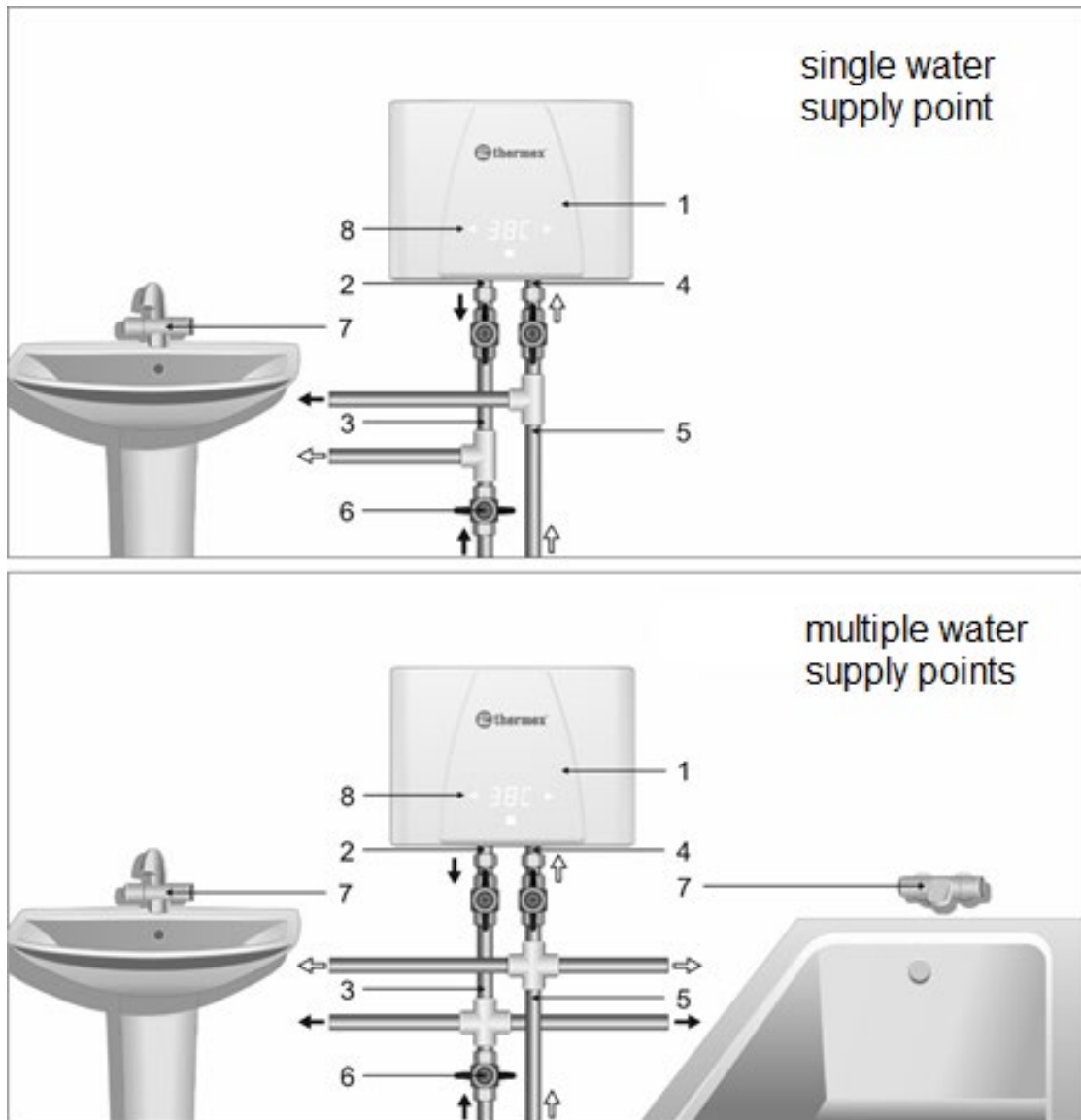


Switch off the power supply, then prepare the 220V ~ single phase power cord without plug, make sure the length no less than 300mm.

1. Mount the bracket on the wall and fix use two screws.
2. Disassemble the cover for the internal power cord connection.
3. For the oversink installation, the two outlets are lower direction, the left outlet is the water outlet (hot / red), right outlet is the water inlet (cold / blue). Cross the power cord through the hole on the backboard, then push the water heater toward the bracket until listening "Click".
4. Connect the power cable to the internal terminal block, for the under-sink installation, terminal is GND-N-L respectively from left to right, for the undersink installation, connector is L-N-GND respectively from left to right, then fix the power cable.

Prepare water connections, assemble the cover, then switch on the power supply.

Water connection



1 – water heater; 2 – hot water outlet; 3 – hot water highway; 4 – cold water inlet; 5 – cold water highway; 6 – shutoff valve (not in complete set); 7 – water mixer (not in complete set), 8 – touchscreen panel.

Important! Purging Air Out

Before switching “ON” the power at the main circuit breaker panel, make sure that the hot water circuit is free of air pockets or else premature failure of the element will occur.

This unit is equipped with a 2-stage power heating element. Therefore the outlet hot water temperature may vary in connection with inlet water temperature and flow rate. To get the desired temperature, adjust the hot water flow rate or add cold water at your mixer.

Make sure the pressure of your water supply system supersedes 0.05MPa.

Technical specifications

Model	Trend 4500	Trend 6000
Electric supply	230 V ~ 50 Hz	230 V ~ 50 Hz
Nominal power rating	4500 W	6000 W
Nominal current	25 A	32 A
Recommended UPS	30 mA	
Flow rate ($\Delta t=25^{\circ}\text{C}$)	2.6 l/min	3.4 l/min
Flow rate ($\Delta t=35^{\circ}\text{C}$)	1.8 l/min	2.5 l/min
Switch on flow rate	1.6 l/min	2.2 l/min
Unit dimensions	190 x 157 x 90 mm	190 x 157 x 90 mm
Unit weight	1.4 kg	1.4 kg
Package dimensions	178 x 110 x 220 mm	178 x 110 x 220 mm
Cable size	2.5 mm ²	4 mm ²
Water connections	G 1/2	G 1/2
Working pressure	~0,07 MPa	~0,08 MPa
Nominal pressure	1 MPa	1 MPa
Type of protection	IP25	IP25
Protection class	I	I
Energy efficiency class	A	A

This device does not require any maintenance by the user.
Repairs should always be carried out by a licensed contractor.

If faulty, never try to repair the device yourself.
Please contact the nearest service specialist for help.

Care

The housing of the device can simply be cleaned with a damp cloth. Do not use harsh chemicals or abrasives!

Prolonged shutdown

Do not use heated water as drinking water.

After prolonged shutdown of the device for example after vacation, the device should be fully heated up to the maximum temperature (tap at minimum flow) before reusing. Pipes should be flushed for one minute. Check the filter which is incorporated in the cold water inlet of the device (blue) regularly and keep it free from debris and dirt. This can be accessed by separating the device from the tap. Make sure you have switched off the main power supply and the main water supply.

OPERATION

IEWH heats water flow instantly, passing it through heating elements. The temperature of inlet water can vary significantly throughout the year: from 5°C in winter to 20°C in summer. Therefore, the same temperature outlet water of IEWH in winter can be significantly less than in summer.

IEWH must be disconnected from power supply network in case not using for a long time.

If IEWH do not use in the winter time and there is water freezing possibility it's recommended to turn off the power and drain the water from IEWH.

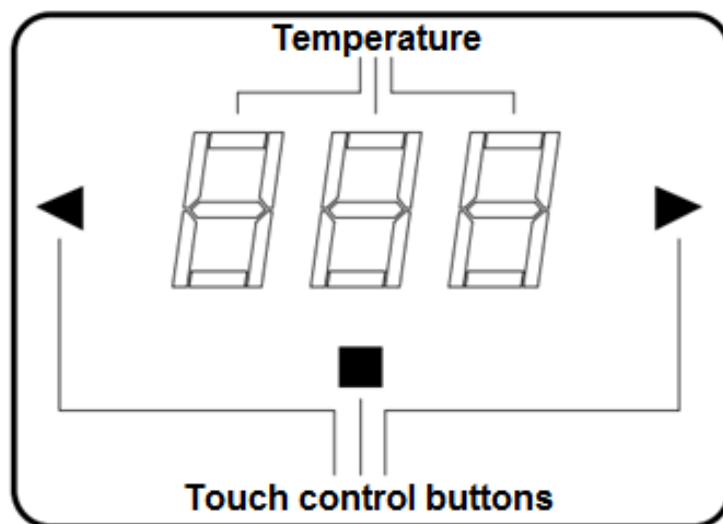
Trend 4500 / 6000 operation:

The water heater has temperature control from 35°C to 50°C.

Device is energy effective owing to automatically adjusting power for selected outlet water flow temperature

IEWH automatically maintains selected water temperature in case of fluctuations temperature and pressure in the water inlet. Ensure that the power and operating pressure are in accordance with technical specifications table.

IEWH automatically determines type of installation (under sink / over sink) and displays information on the front panel correctly.



Thermex Trend front panel

Step 0. Turn on the power, open the hot water tap and wait about 10-15 seconds.

Step 1. Hot water tap opened, press power button, touch keys will light up, then press power button again. In 2 seconds front panel will display the default outlet water temperature (38°C), then the device will display the actual temperature.

Step 2. Hot water tap opened, set the desired outlet temperature. In 2 seconds front panel will display the adjusted temperature, and then the device will display the actual temperature, heating the water till the temperature adjusted.

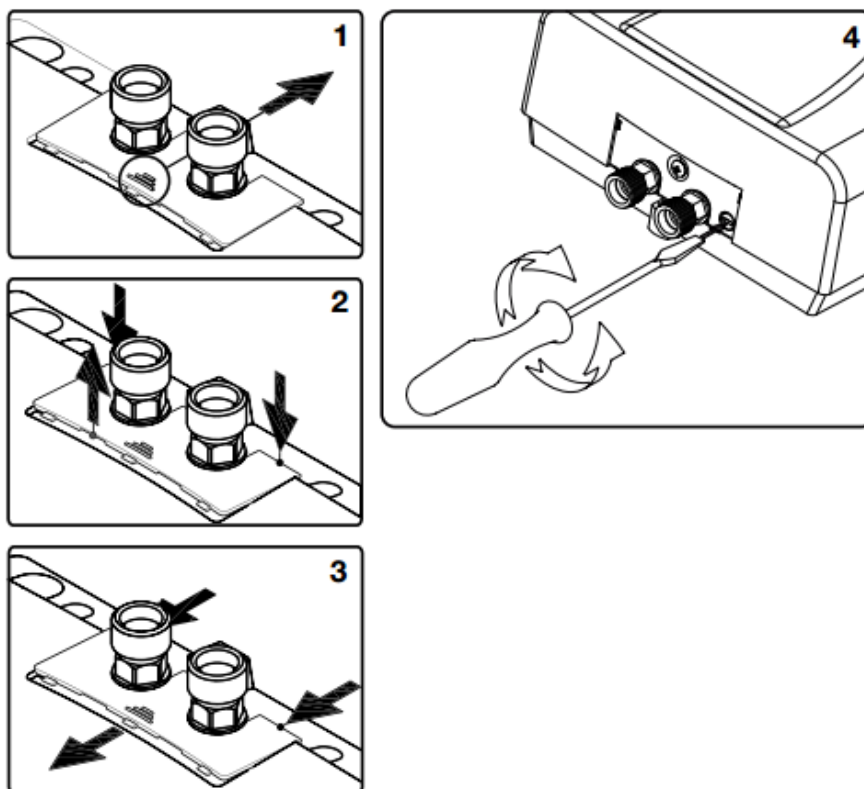
If device has not reached adjusted temperature, it's necessary to adjust (decrease) water flow. If necessary temperature is not reached yet with minimal water flow, the power of the device is not enough to achieve necessary temperature value at the current temperature of the inlet water (in the water supply system).

Step 3. To turn off the water heater close the hot water tap on the mixer, the pressure sensor will automatically disconnect power supply. The temperature LED will switch off immediately, the touch keys will stop illumination after 3 seconds.

Note: Temperature settings will be saved for the next power on. The device turns on/off automatically with opening/closing hot water tap. Step 0 is only necessary in case of power failure.

Adjustment of water flow (carried out by the expert):

Following the instructions in figure below, remove the protective panel located between connection pipes. Using a flat-head screwdriver, turn the adjusting screw clockwise or counterclockwise to increase or decrease flow rate.



Adjustment of water flow

MAINTENANCE AND CARE

IEWH does not require any user maintenance. Repair must be carried out by a licensed service organization.

In case of malfunctions, don't try to repair the IEWH by yourself. Please contact your nearest service center for assistance.

IEWH case can be wiped with a slightly damp cloth. Don't use abrasive materials or harsh chemicals. Regularly clean spray heads of shower head and tap from dirt.

Regularly check and clean inlet filter, if it had been located in the inlet pipe. Filter should be carried with disconnecting the IEWH from cold water supply pipe. Make sure that you have already disconnected the device from the power supply.

Do not use water from IEWH as drinking water.

TROUBLESHOOTING

Symptom: No heat, indicator light off

Cause	Remedy
Electric supply is off	Turn on the main circuit breaker.
No or low water flow	Ensure that the minimum water pressure (0.05 MPa) to switch on the device is met. Also check that the inlet filter screen is clear from any debris.
Water connections are reversed	Cold water inlet = blue Hot water outlet = red.
Element burned out	Call local dealer for maintenance

Symptom: Water does not heat up, “E2” error displayed

Cause	Remedy
Outlet water temperature sensor error	Contact your authorized service center

Symptom: Weak water heating

Cause	Remedy
The user-set water temperature is very low or the water flow is strong	Set a higher outlet temperature or reduce the water flow

Mentioned malfunctions are not defects and should be eliminated by the consumer or at his expense.

If the water heater does not work properly, return it to the purchase place.

TRANSPORTATION AND STORAGE

Transportation and storage of electric heaters is carried out in accordance with the handling signs on the package:



– Need to protect cargo from moisture



– Cargo fragility, condition of careful handling



– Recommended temperature range for cargo storage: from +10°C to +20°C



– Loading vertical position

WARRANTY CONDITIONS

Warranty

The rights under this manufacturer's warranty shall apply in addition to the buyer's statutory rights. This warranty shall in no way restrict the buyer's statutory rights.

Entitlement

The claiming of rights under this warranty shall be subject to the submission of the respective proof of purchase.

Content

We guarantee as the manufacturer that this product is free of material and manufacturing errors. Material and manufacturing errors arising during the warranty period shall justify the rights under the warranty. This warranty shall not cover errors due to improper installation or incorrect usage, incorrect operating conditions, or improper maintenance or repair work.

Normal wear and tear such as lime scaling shall also be excluded under this warranty. The warranty will not be valid if the problem is caused by extreme values of drinking water (pH value not between 7 and 9.5 and/or Cl above 150 mg/l and/or Fe above 0.2mg/l).

Duration

The warranty shall be valid for 24 months. The warranty period shall commence on the day on which the product is purchased. Warranty services provided shall neither prolong the warranty period nor initiate a new warranty period.

Claims

The defective product should be sent together with the proof of purchase to the place of purchase.

We shall not be liable for transport damage. The product shall be repaired or replaced at the discretion of us. The functioning product shall then be sent to the buyer. We shall acquire ownership of replaced parts or products.

We shall not be obliged to provide other services such as repair on location.

Invalidity of warranty

Attempted repairs carried out by a customer or third party that are not authorized by us shall invalidate the warranty. The same shall apply if parts are installed in the product or connected to the product that are not original parts from us.

Restriction

This warranty shall be restricted to rectification and subsequent delivery. This warranty shall not include compensation, withdrawal from the agreement, reduction in price or any reimbursement for consequential loss due to defects.

The statutory provisions and delivery conditions of the national company or importers must be observed.

INFORMATION ABOUT THE MANUFACTURER

Manufacturer:

SUMEC Machinery&ElectricCo., Ltd

198 Changjiang Road, Nanjing, 210018, China

Country of production – P.R.C.